

RHYTHM GUITAR

HEAVY RIFFS W/POWER CHORDS

FIG. 1 F# AEOLIAN MODE

FIG. 2 RANDY RHOADS, A LA "CRAZY TRAIN"

FIG. 2 SLOW

FIG. 3 F# PHRYGIAN MODE

FIG. 4 GEORGE LYNCH, A LA "MR. SCARY"

FIG. 4 SLOW

FIG. 5 METALLICA, A LA "MASTER OF PUPPETS"

FIG. 5 SLOW

FIG. 6 MEGADETH, A LA "HOLY WARS"

FIG. 6 SLOW

SYNCOPATED POWER CHORDS W/SINGLE-NOTE RIFFS

FIG. 7 AC/DC, A LA "HIGHWAY TO HELL"

FIG. 7 SLOW

FIG. 8 RANDY RHOADS A LA "FLYING HIGH AGAIN"

FIG. 8 SLOW

TWO-NOTE POWER CHORDS W/PEDAL TONES

FIG. 9 A LA IRON MAIDEN

FIG. 9 SLOW

FIG. 10 A LA JUDAS PRIEST

FIG. 10 SLOW

FIG. 11 OZZY/JAKE E. LEE A LA "BARK AT THE MOON"

FIG. 11 SLOW

POWER CHORDS W/SINGLE-NOTE RIFFS

FIG. 12 A LA "BARK AT THE MOON"

FIG. 12 SLOW

HARMONIZED SINGLE-NOTE LINES

FIG. 13 IRON MAIDEN, A LA "THE TROOPER"

FIG. 13 SLOW "GALLOPING" RHYTHM

FIG. 13 SLOW LEAD GTR. 1

FIG. 13 SLOW LEAD GTR. 2

TWO-NOTE POWER CHORDS W/RIFFS

FIG. 14 MOTLEY CRUE, A LA "GIRLS GIRLS GIRLS"

FIG. 14 SLOW

FIG. 15 GUNS N' ROSES, A LA "PARADISE CITY"

FIG. 15 SLOW

THRASH/SPEED METAL

FIG. 16 ANTHRAX, A LA "CAUGHT IN A MOSH"

FIG. 16 SLOW

FIG. 17 SLAYER, A LA "ANGEL OF DEATH"

FIG. 17 SLOW

DEATH METAL/GRINDCORE

FIG. 18 A LA CANNIBLE CORPSE

FIG. 18 SLOW

FIG. 19 CARCASS, A LA "BURIED DREAMS"

FIG. 19 SLOW

SEVEN-STRING GUITAR

FIG. 20 MORBID ANGEL, A LA "GOD OF EMPTINESS"

FIG. 20 SLOW

BLACK METAL

FIG. 21 VENOM, A LA "BLACK METAL"

FIG. 21 SLOW

HEAVY METAL

FIG. 22 WHITESNAKE, A LA "STILL OF THE NIGHT"

FIG. 22 SLOW

FIG. 23 PANTERA, A LA "FIVE MINUTES ALONE"

FIG. 23 SLOW

SOLOING

FIG. 24 E AEOLIAN

FIG. 25 IRON MAIDEN, A LA "THE TROOPER"

FIG. 25 SLOW

FIG. 26 MODAL LEGATO LINES, A LA RANDY RHOADS "MR. CROWLEY"

FIG. 26 SLOW

HARMONIZED MODAL SOLOS

FIG. 27 D AEOLIAN HARMONIZED

FIG. 28 HARMONIZED SOLO IN THIRDS, A LA RANDY RHOADS

UNISON BENDS

FIG. 29 BASED ON E DORIAN

FIG. 30 A LA IRON MAIDEN "RUN TO THE HILLS"

FRETBOARD TAPPING

FIG. 31 OVERVIEW

FIG. 32 EDDIE VAN HALEN STYLE TAPPING W/PICK

FIG. 33 A LA RANDY RHOADS "FLYING HIGH AGAIN"

FIG. 33 SLOW

21ST CENTURY

SEVEN-STRING DOWN ONE WHOLE STEP

KORN

FIG. 1 A LA "SHOOTS AND LADDERS"

FIG. 1 SLOW

FIG. 2 UNUSUAL OVERDUBS

DROP D DOWN ONE WHOLE STEP

SYSTEM OF A DOWN

FIG. 3 A LA "SPIDERS"

FIG. 3 SLOW

ZAKK WYLDE/BLACK LABEL SOCIETY

FIG. 4 A LA "SUICIDE MESSIAH"

FIG. 4 SLOW

KILLSWITCH ENGAGE

FIG. 5 A LA "FIXATION ON THE DARKNESS"

FIG. 5 SLOW

SHADOWS FALL

FIG. 6 A LA "INSPIRATION ON DEMAND"

FIG. 6 SLOW

FIG. 7 D AEOLIAN MODE

FIG. 8 HARMONIZED SOLOING

FIG. 8 SLOW

DROP D DOWN ONE AND A HALF STEPS

SLIPKNOT

FIG. 9 A LA "WAIT AND BLEED"

FIG. 9 SLOW

DROP D TUNING

LAMB OF GOD

FIG. 10 D HARMONIC MINOR SCALE

FIG. 11 PHRYGIAN DOMINANT SCALE (FIFTH MODE OF HARMONIC MINOR)

FIG. 12 A LA "ASHES OF THE WAKE"

FIG. 12 SLOW

TRIVIUM

FIG. 13 A LA "A GUNSHOT TO THE HEAD OF TREPIDATION"

FIG. 13 SLOW

DOWN TWO WHOLE STEPS IN FLAMES

FIG. 14 HARMONIZED GTRS. A LA "EPISODE 666"

FIG. 14 SLOW

Sixties/Seventies:

Rhythm Guitar Heavy single-note riffs

FIGURE 1 E minor pentatonic scale
(E G A B D), open position

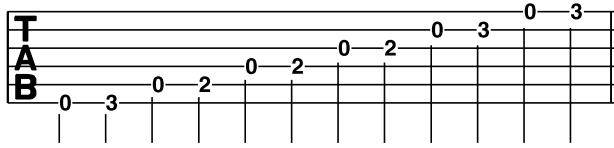


FIGURE 2 extended position

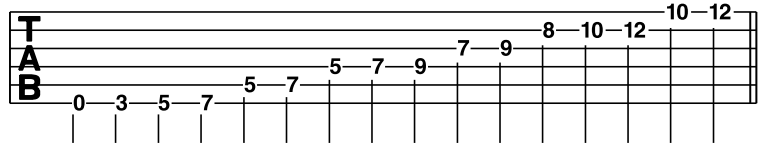


FIGURE 3 12th position

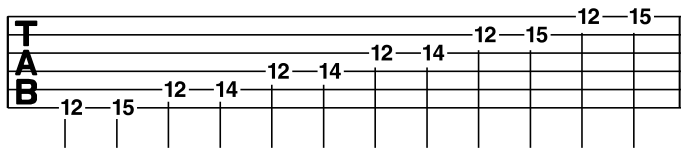


FIGURE 4 A minor pentatonic scale
(A C D E G), 5th position

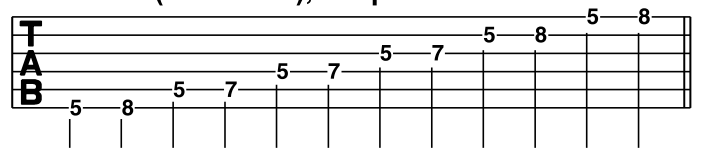


FIGURE 5 extended position

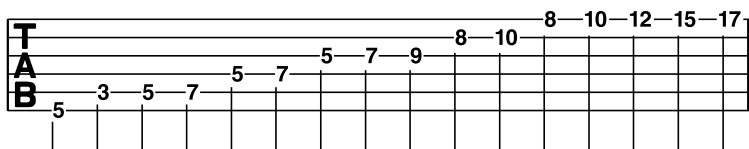


FIGURE 6 The Yardbirds,
a la "Smokestack Lightning"

Moderately ♩ = 138 w/Triplet Feel (♩ = ♩^3)

(E7)

1/2 (play 4 times)

Tablature for the "Smokestack Lightning" riff. The treble clef staff shows fret numbers 0, 2, 0, 2, 0, 2, 0, 2, 0, 2. The bass clef staff shows fret numbers 0, 0, 3, 0, 2, 4, 2, 0, 2, 0. The riff is marked with a 1/2 note and a triplet feel. There is a wavy line above the 0 fret notes. The instruction "(play 4 times)" is written above the final note.

FIGURE 7 Jimi Hendrix, a la "Purple Haze"

Moderately ♩ = 100

(E7#9)

1., 2.

Tablature for the "Purple Haze" riff. The treble clef staff shows fret numbers 7, 9, 9, 8, 7, (7), 9, 7, 9, 7, (9), 5, 7, 7, (7), 0. The bass clef staff shows fret numbers 7, 9, 9, 8, 7, (7), 9, 7, 9, 7, (9), 5, 7, 7, (7), 0. The riff is marked with a 1/4 note and a wavy line above the 8 fret note. There is a wavy line above the 0 fret notes. The instruction "(play 4 times)" is written above the final note.

3.

Tablature for the 3rd measure of the "Purple Haze" riff. The treble clef staff shows fret numbers 5, 5, (5), 7, (7), 0. The bass clef staff shows fret numbers 5, 5, (5), 7, (7), 0. The riff is marked with a 1/4 note and a wavy line above the 5 fret note. There is a wavy line above the 0 fret notes.