

THE AUTHENTIC GUITAR STYLE OF . . .

HARRY CHAPIN

**Cherry Lane Music
ACOUSTIC GUITAR SERIES**

CONTENTS

- 4 CAT'S IN THE CRADLE
- 41 COREY'S COMING
- 50 IF MY MARY WERE HERE
- 24 OLD COLLEGE AVENUE
- 38 SANDY
- 28 SHE SINGS SONGS WITHOUT WORDS
- 32 TANGLED UP PUPPET
- 10 TAXI
- 53 WINTER SONG

- 2 Tablature Explanation
- 3 Introduction by Wolf Marshall

Cover Photo by Steve Stout
Introduction by Wolf Marshall
Transcribed by Kenn Chipkin
Edited by Mark Phillips
Art Direction: Alisa Hill
Production Manager: Daniel Rosenbaum
Administration: Deborah Poletto

ISBN: 0-89524-384-9

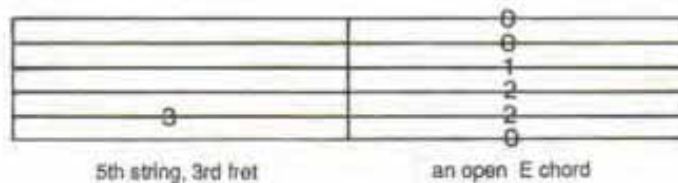
Copyright © 1988 Cherry Lane Music Company, Inc.
International Copyright Secured All Rights Reserved

READING GUITAR TABLATURE

Tablature is a six-line staff that graphically represents the guitar fingerboard, with the top line indicating the highest sounding string (high E).

1st string - High E	
2nd string - B	
3rd string - G	
4th string - D	
5th string - A	
6th string - Low E	

By placing a number on the appropriate line, the string and fret of any note can be indicated. The number 0 represents an open string. For example:



PERFORMANCE NOTES

Stem Direction

In music of two or more parts, notes with downward stems are played by the thumb; notes with upward stems are played by the fingers; a note with a double stem (up and down) is played by the thumb. For example:



Th = thumb; i = index finger;
m = middle finger

Left Hand Techniques

A hammer-on is indicated by the letter H. A pull-off is indicated by the letter P. A slide is indicated by the letters *sl.* For example:



Right Hand Techniques

A downward strum is indicated by the symbol .
An upward strum is indicated by the symbol .
For example:

