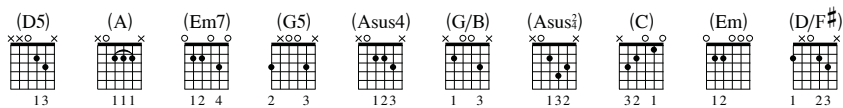


from Taylor Swift - *Fearless*

# Fearless

Words and Music by Taylor Swift, Liz Rose and Hillary Lindsey



Gtrs. 1 & 3: Capo III  
Gtrs. 2 & 6: Capo I

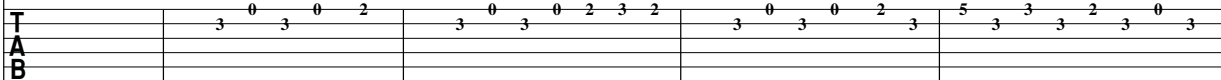
**Intro**  
Moderately ♩ = 100

F  
\*(D)  
((E))

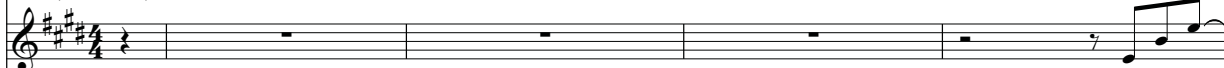
Gtr. 1 (elec.)



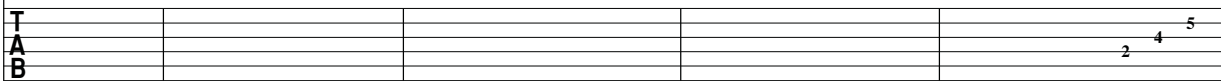
*mf*  
w/ slight dist.  
let ring throughout



Gtr. 2 (12-str. acous.)



*mf*  
let ring throughout



\*Symbols in parentheses represent chord names respective to capoed Gtrs. 1 & 3.  
Symbols in double parentheses represent chord names respective to capoed Gtrs. 2 & 6.  
Symbols above reflect actual sounding chords. Capoed fret is "0" in tab.  
Chord symbols reflect overall harmony.

C (A) ((B))      Gm (Em) ((F#m))      B♭sus2 (Gsus2) ((Asus2))

