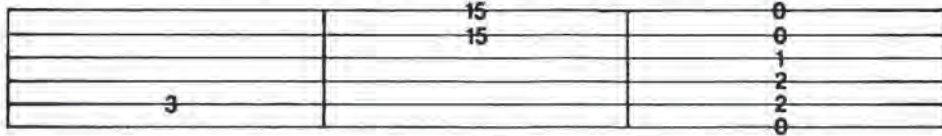


# TABLATURE EXPLANATION

**TABLATURE** A six-line staff that graphically represents the guitar fingerboard. By placing a number on the appropriate line, the string and fret of any note can be indicated. For example:



5th string, 3rd fret

1st string, 15th fret,  
2nd string, 15th fret,  
played together

an open E chord

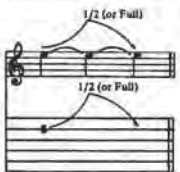
## Definitions for Special Guitar Notation (For both traditional and tablature guitar lines)



**BEND:** Strike the note and bend up  $\frac{1}{2}$  step (one fret).



**BEND:** Strike the note and bend up a whole step (two frets).



**LEGATO BEND AND RELEASE:** Strike the note. Bend up  $\frac{1}{2}$  (or whole) step, then release the bend back to the original note. All three notes are tied; only the first note is struck.



**GHOST BEND:** Bend the note up  $\frac{1}{2}$  (or whole) step, then strike it.



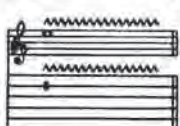
**GHOST BEND AND RELEASE:** Bend the note up  $\frac{1}{2}$  (or whole) step. Strike it and release the bend back to the original note.



**UNISON BEND:** The lower note is struck slightly before the higher. It is then bent to the pitch of the higher note. They are on adjacent strings.



**VIBRATO:** The string is vibrated by rapidly bending and releasing a note with the fret hand or tremolo bar.



**SHAKE OR EXAGGERATED VIBRATO:** The pitch is varied to a greater degree by vibrating with the fret hand or tremolo bar.



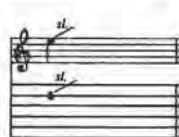
**SLIDE:** The first note is struck and then the same finger of the fret hand moves up the string to the location of the second note. The second note is not struck.



**SLIDE:** Same as above, except the second note is struck.



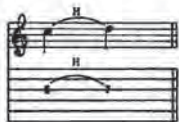
**SLIDE:** Slide up to the note indicated from a few frets below.



**SLIDE:** Strike the note and slide up an indefinite number of frets, releasing finger pressure at the end of the slide.



**PICK SLIDE:** The edge of the pick is rubbed down the length of the string. A scratchy sound is produced.



**HAMMER-ON:** Strike the first (lower) note, then sound the higher note with another finger by fretting it without picking.



**PULL-OFF:** Both fingers are initially placed on the notes to be sounded. Strike the first (higher) note, then sound the lower note by pulling the finger off the higher note while keeping the lower note fretted.



**FRETBOARD TAPPING:** Hammer ("tap") onto the fretboard with the index or middle finger of the pick hand and pull off to the note fretted by the fret hand ("T" indicates "tapped" notes).



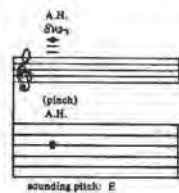
**TREMOLO PICKING:** The note is picked as rapidly and continuously as possible.



**NATURAL HARMONIC:** The fret hand lightly touches the string over the fret indicated; then it is struck. A chime-like sound is produced.



**ARTIFICIAL HARMONIC:** The fret hand fingers the note indicated. The pick hand produces the harmonic by using a finger to lightly touch the string at the fret indicated in parentheses and plucking with another finger.



**ARTIFICIAL "PINCH" HARMONIC:** The note is fretted normally and a harmonic is produced by adding the edge of the thumb or the tip of the index finger of the pick hand to the normal pick attack. High volume or distortion will allow for a greater variety of harmonics.



**TREMOLO BAR:** The pitch of a note or chord is dropped a specified number of steps, then returned to the original pitch.



**PALM MUTE (P.M.):** The note is partially muted by the pick hand lightly touching the string(s) just before the bridge.



**MUFFLED STRINGS:** A percussive sound is produced by laying the fret hand across the strings without depressing them to the fretboard and striking them with the pick hand.

# MOOD FOR A DAY

As Recorded by Yes  
(From the album FRAGILE/Atlantic Records)

Music by Steve Howe

Vivace ♩ = 138

G/D F#7/C# G/D F#7/C# G/D F#7/C# F#7/C#

*mf*

\*Gently tap face of guitar.

Bm A G F# H G/B F# A#

H P H P H

Bm A(6) H P P G F# H G/B F# A# To Coda N.C.

H P P H P H H P P H P P H P P H P P H

*poco rit.*

H P P H H P P H H P P H H P P H H P P H

H P P H H P P H H P P H H P P H H P P H

Allegretto ♩ = 92

Bm/D E7 G

H P P H H P P H H P P H H P P H H P P H

(Grad. pick closed to sound hole)

Copyright © 1972, 1988 Topographic Music Ltd.  
All rights for the World administered by WB Music Corp.  
All rights reserved. Used by Permission